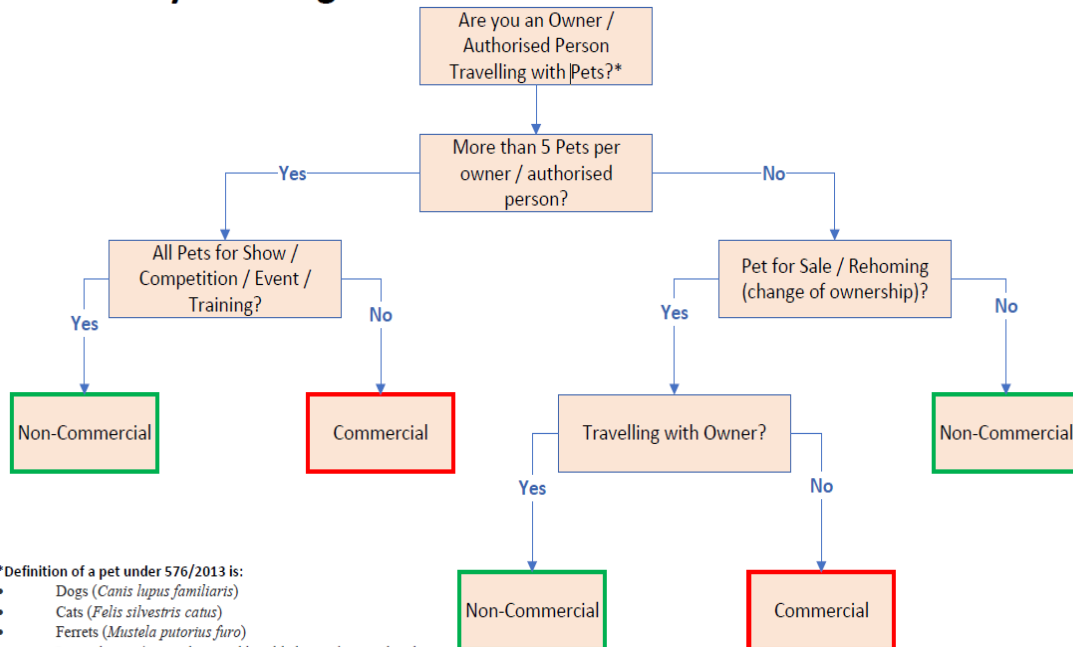


Ferry Booking guidance for Commercial & Non- Commercial Pet Travel from GB to NI

Commercial pet travel (see map below to identify) should be booked via Freight booking rather than the Passenger booking as the commercial movement must be declared by ferry operators to the Competent Authority of entry into the EU. If the movement is defined as a non-commercial movement, then the Ferry booking can be progressed as a passenger booking rather than a freight booking.

Please Contact your Ferry Operator should you require any further Information or guidance on this process. Details of ferry operators can be found by clicking this link [Ferry services | nidirect](#).

Ferry Booking Guidance for Pet Travel from GB to NI



***Definition of a pet under 576/2013 is:**

- Dogs (*Canis lupus familiaris*)
- Cats (*Felis silvestris catus*)
- Ferrets (*Mustela putorius furo*)
- Invertebrates (except bees and bumble bees who are already subject to BCP controls and manifest declarations)
- Ornamental aquatic animals
- Amphibia
- Reptiles
- Birds (other than for example poultry who are already subject to BCP controls)
- Rodents and Rabbits (other than those intended for food production who are already subject to BCP controls)

Failure to declare the commercial movement may result in the animal(s) being detained and/or reexported.

Further guidance on additional movement requirements can be accessed via the resources below.

Dogs, Cats & Ferrets

[Guidance on bringing commercial transports of Dogs, Cats and Ferrets to NI from GB | Department of Agriculture, Environment and Rural Affairs \(daera-ni.gov.uk\)](#)

[Travelling with Pets | Department of Agriculture, Environment and Rural Affairs \(daera-ni.gov.uk\)](#)

Reptiles, Amphibians & Invertebrates

[Imports of reptiles, tortoises, snakes and insects | Department of Agriculture, Environment and Rural Affairs \(daera-ni.gov.uk\)](#)

Rodents

[Travelling with Pets | Department of Agriculture, Environment and Rural Affairs \(daera-ni.gov.uk\)](#)

Captive Birds

Commercial Imports of Captive Birds are currently not permitted as NI does not have an approved quarantine facility. These Birds must be imported through another EU member state which does have quarantine facilities.

5 or less pet birds accompanying their owner can continue to be imported as a non-commercial movement. Please see this link [here](#) for guidance.

SPS Facilities contact details

- Belfast:

DAERA Veterinary Service Portal Branch

Old Ulster Bus Yard, Duncrue Street, Belfast, BT3 9BJ

Belfast.portal@daera-ni.gov.uk

T: 028 9037 8555

- Larne:

DAERA Veterinary Service Portal Branch, Redlands Road, Larne Harbour, BT40 1AX

Larne.portal@daera-ni.gov.uk

T: 028 2826 0021

Facilities are open 24 Hours a day.

If in doubt, please contact :

DAERA Trade Imports

Email: daeratradeimports@daera-ni.gov.uk Tel: 02890 524588